

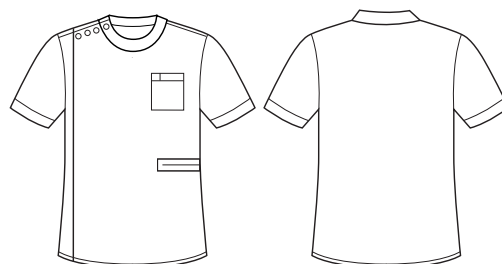


NEW

## MENS ESSENCE DENTIST/PHARMACY JACKET

CPT451MS

Ideal for several industries, from pharmaceutical to dental care services, this top is designed to feel as good as it looks. In a choice of crisp white or black, the streamlined design with its smart standing collar is a pleasure to wear.



### COLOURS



### GARMENT MEASUREMENTS

SIZE	XS	S	M	L	XL	2XL	3XL	4XL	5XL
½ CHEST* (CM)	52	55	58	61	65	69	73	77	81
LENGTH FROM HSP (CM)	74	75	76	77	78	79	80	81	82

\* ½ CHEST MEASURED 2.5CM BELOW UNDERARM

### STYLE F&B

- Relax fit
- Asymmetrical front with full length zip and ring-snap fastener closure at neck
- Patch pocket on left front chest with pen partition
- Band collar
- Straight hemline with side splits for ease of movement
- Bar tacked reinforcement on pockets and splits

### FABRIC COMPOSITION

- 77% Recycled Polyester 19% Viscose 4% Elastane

### CARE DETAILS

- Machine wash in warm water at a normal setting. Wash with like colours, inside out. Tumble dry on low. Cool iron if required.
- Fabric that has been engineered to be an easy-care fabric with a durable water repellent (DWR) finish.

### STYLE TIPS

- Suitable for beauty, pharmacy, dental and a range of other Care industries
- Wear with any functional lower to complete the look

This garment is made from 77% recycled polyester resulting in the equivalent of 18 plastic bottles being diverted from landfill.